



STARHOTELS®
PREMIUM

Anderson
MILANO

Anderson

MILANO



Metropolitan chic

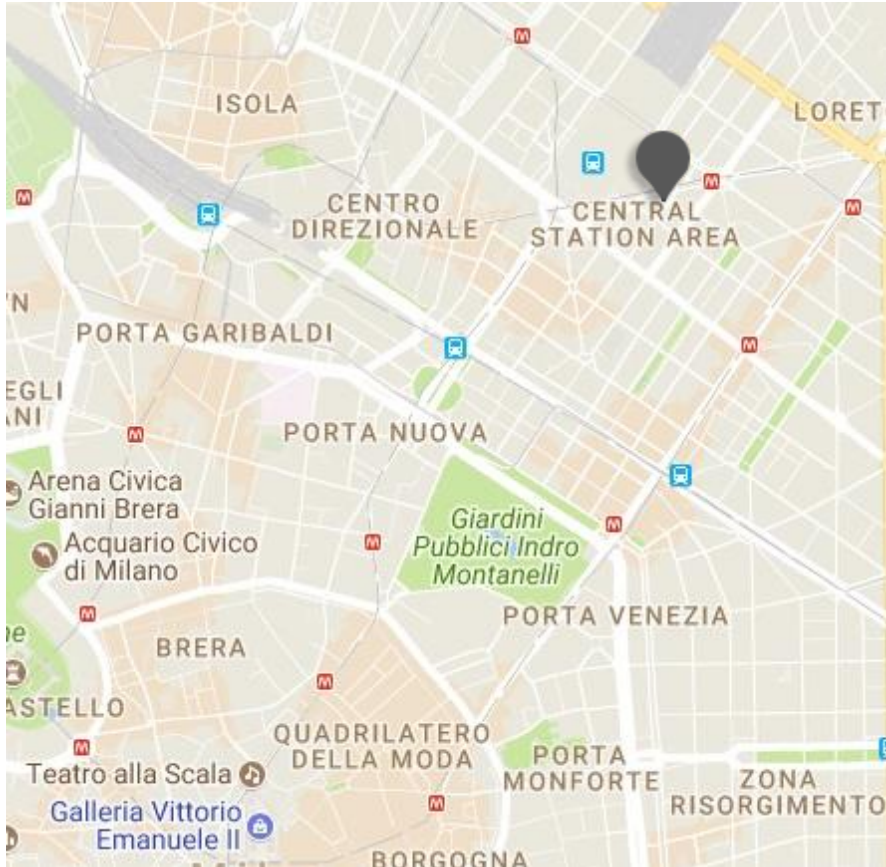
A landmark in its own right, just a few steps from the Central railway station, the Anderson is woven into the fabric of Milano's fashion scene.

With its metropolitan lounge and cosmopolitan atmosphere, it's a favorite with many of the country's leading designers. Tactile materials. Minimalist interiors.

Artful splashes of color. Each one of the 106 rooms has been carefully designed to fuse style and substance.

Anderson

MILANO



Location

Next to the Central railway station and a few minutes from the city centre

Distances

Railway station:

air terminal Km 0,1

Highway: Km 6

Underground:

MM2 Caiazzo - MM2 - MM3 Stazione Centrale

Airport:

Linate Km 8 - Malpensa Km 50

Fairgrounds:

Milano (City) Km 4 - Milano (Rho) Km 12

Piazza Luigi di Savoia, 20 - 20124 Milano - Italy

T +39 02 6690141 F +39 02 6690331

anderson.mi@starhotels.it

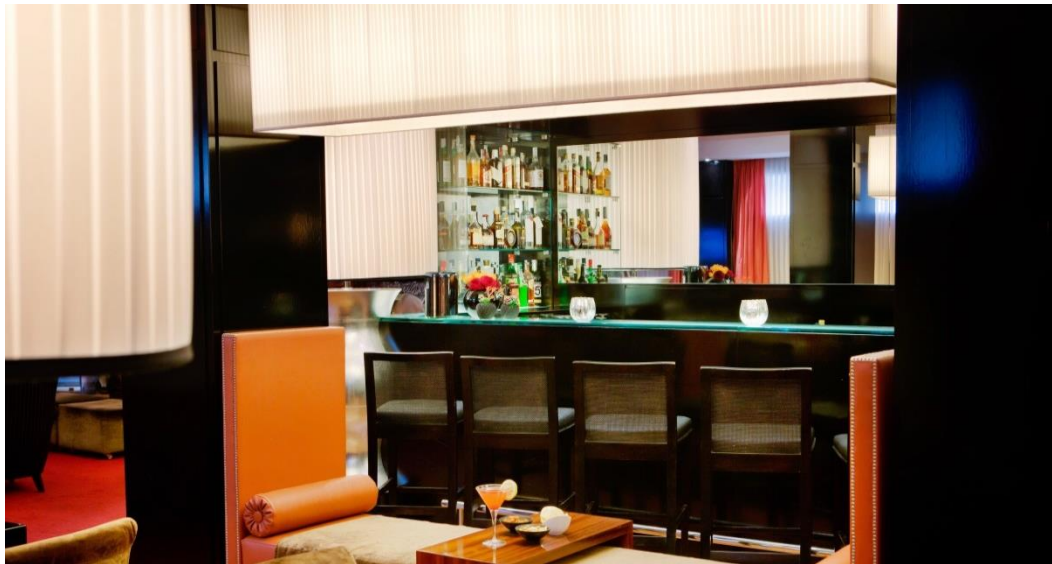
starhotels.com

Anderson

MILANO

Restaurant & Bar

The Black Bar & Restaurant by Eataly serves creative Mediterranean cuisine inspired by the north and south of Italy. Ingredients are lovingly and expertly sourced, bringing to the table the finest produce, which are also selected with the help of Eataly.



Anderson

MILANO



106 Rooms

58 Superior

47 Deluxe

1 Junior Suite

Thoughtfully designed to combine comfort with contemporary chic, our 106 rooms showcase the best in Italian style.





Meetings & Events

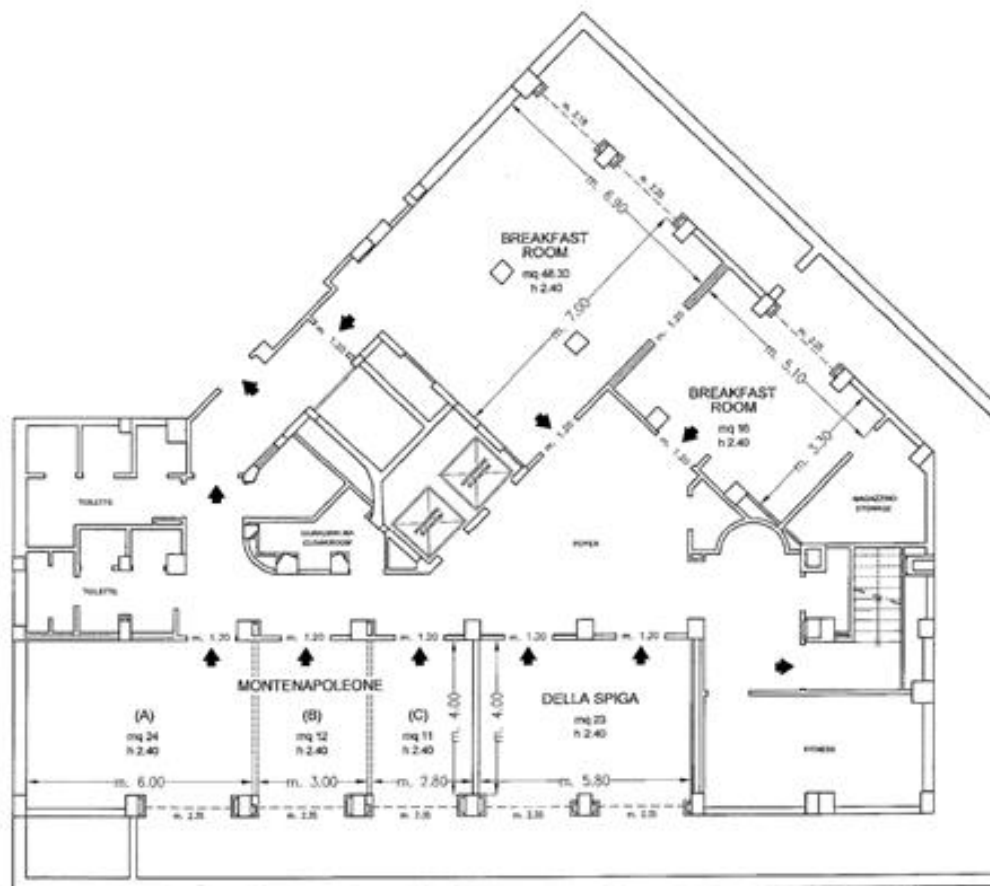
Meeting rooms: 4
Capacity (theatre style): 50 max

Our 4 modern meeting rooms, for up to 50 people, and experienced team will help make your event one to remember.



Anderson

MILANO



Piano -1 / Basement

Anderson

MILANO

Meeting rooms	Area mq / ft.	L x W mt. / ft.	Height mt. / ft.	Theatre	Class room	Conference table/ U-shape	Cabaret style^	Cocktail reception	Banquet
Montenapoleone (A)	24 258,24	6,00x4,00 19,68x13,12	2,4 7,87	15	-	12 - 8	-	-	-
Montenapoleone (B)	12 129,12	3,00x4,00 9,84x13,12	2,4 7,87	-	-	8	-	-	-
Montenapoleone (C)	11 118,36	2,80x4,00 9,19x13,12	2,4 7,87	-	-	8	-	-	-
(A+B)	36,5 392,74	9,00x4,00 29,53x13,12	2,4 7,87	35	16	20 - 15	-	-	-
(B+C)	23,5 252,86	5,80x4,00 19,03x13,12	2,4 7,87	15	-	12 - 8	-	-	-
(A+B+C)	50 516,48	11,80x4,00 38,71x13,12	2,4 7,87	50	24	26 - 24	-	-	-
Della Spiga	23 247,48	5,80x4,00 19,03x13,12	2,4 7,87	15	-	12 - 8	-	-	-
Black Bar & Restaurant by Eataly°	48 516,48	6,90x7,00 22,64x22,97	2,4 7,87	-	-	-	-	50	34
Breakfast Room	64,3 691,87	12,00x7,00 39,37x22,97	2,4 7,87	-	-	-	-	-	50

° Daylight

^ Cabaret style Sizes tables diameter 150 cm